

TCH - 340 HIGH VACUUM OVEN

“TCH-340” oven is a cold-wall "heated shelves" rugged high vacuum oven for professional, industrial or educational use for non flammable, non volatile or combustible materials.



The “TCH-340” performs four main functions:

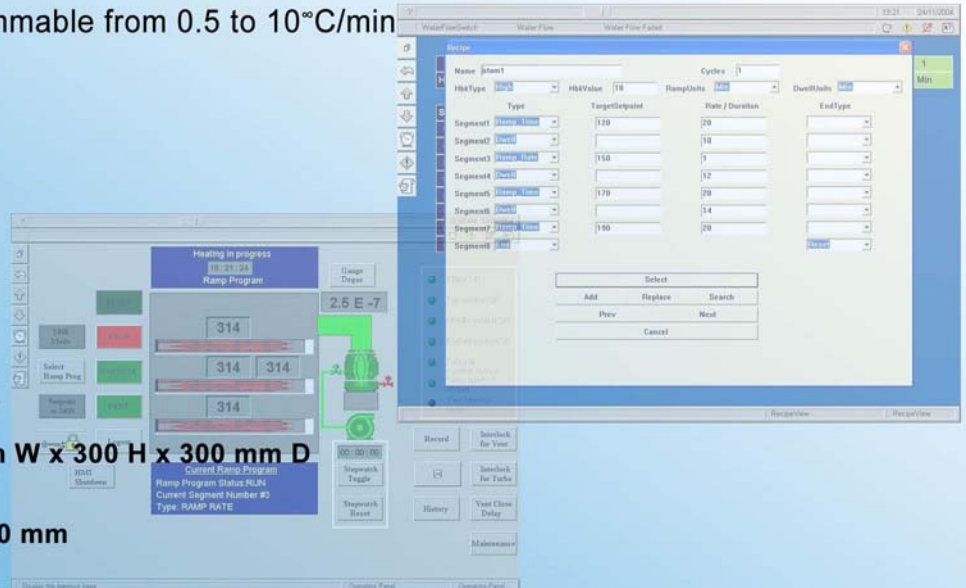
- Heating the chamber
- Pumping down the chamber (reducing the pressure into the chamber below atmosphere pressure).
- Purging with dry nitrogen
- Venting the chamber - raising the pressure into the vacuum chamber to Atmospheric Pressure.

FEATURES:

- The vacuum chamber is made of stainless steel, box construction, electropolished, with internal heated shelves.
- Pumping system with dry or "wet" roughing pumps and turbo molecular pumps to suit specific application
- A normally closed electromagnetic roughing valve permits holding a low pressure into the chamber when main power switch is OFF or during power failure.
- Electromagnetic vent valve permits purging with Nitrogen or Argon
- Supply with high performance pumps and vacuum gauges as a "Plug & Play" unit.
- Full line of gaskets to suit applications such as "Silicon free" environment.
- The shelves are independently controlled to achieve uniform temperature regardless of the load on each of the oven shelves. One of the shelves is consider as master while the other shelves are controlled in a slave mode with dynamic set-point.
- The PLC controls all interlocks including the over temperature protection. The PLC is also used for easy programming of the vacuum and temperature ramping cycle.
- The system can be delivered with our OMNICONVAC II software and PC communication capability.
- This optional feature has the advantage of auto storage of all analog system data, on-line, for in-situ and ex-situ analysis. The OMNICONVAC II makes the ramping programming extremely easy.
- It is also possible to overlap the actual values recorded during the process with the required values
- The heating ramps are programmable from 0.5 to 10°C/min

Technical Data:

Internal Volume	27 liter
Dimensions:	300 mm W x 300 H x 300 mm D
Number of used shelves	4
Used shelves space	240x270 mm
Distance between shelves	64 mm
Heating Range	up to 350°C and not less than ambient temperature
Vacuum Range	less than 1x10⁻⁶ Torr (after 120 min of pumping down of the clean empty chamber)
Ultimate vacuum	less than 4x10⁻⁷ Torr
Dimensions	
(without vacuum pump)	660 mm H x 480 mm W x 556 mm D
Weight	105 kg



Contact



Vacuum Systems Technologies & Services Ltd.
 19 Imber St. P.O.B 4137, Petach Tikwa 49130
 Israel
 Tel: +972 (3) 9247712 Fax: +972 (3) 9247711
 marketing@vacuumltd.com
 www.vacuumltd.com